

# THERA *Wave* AVE

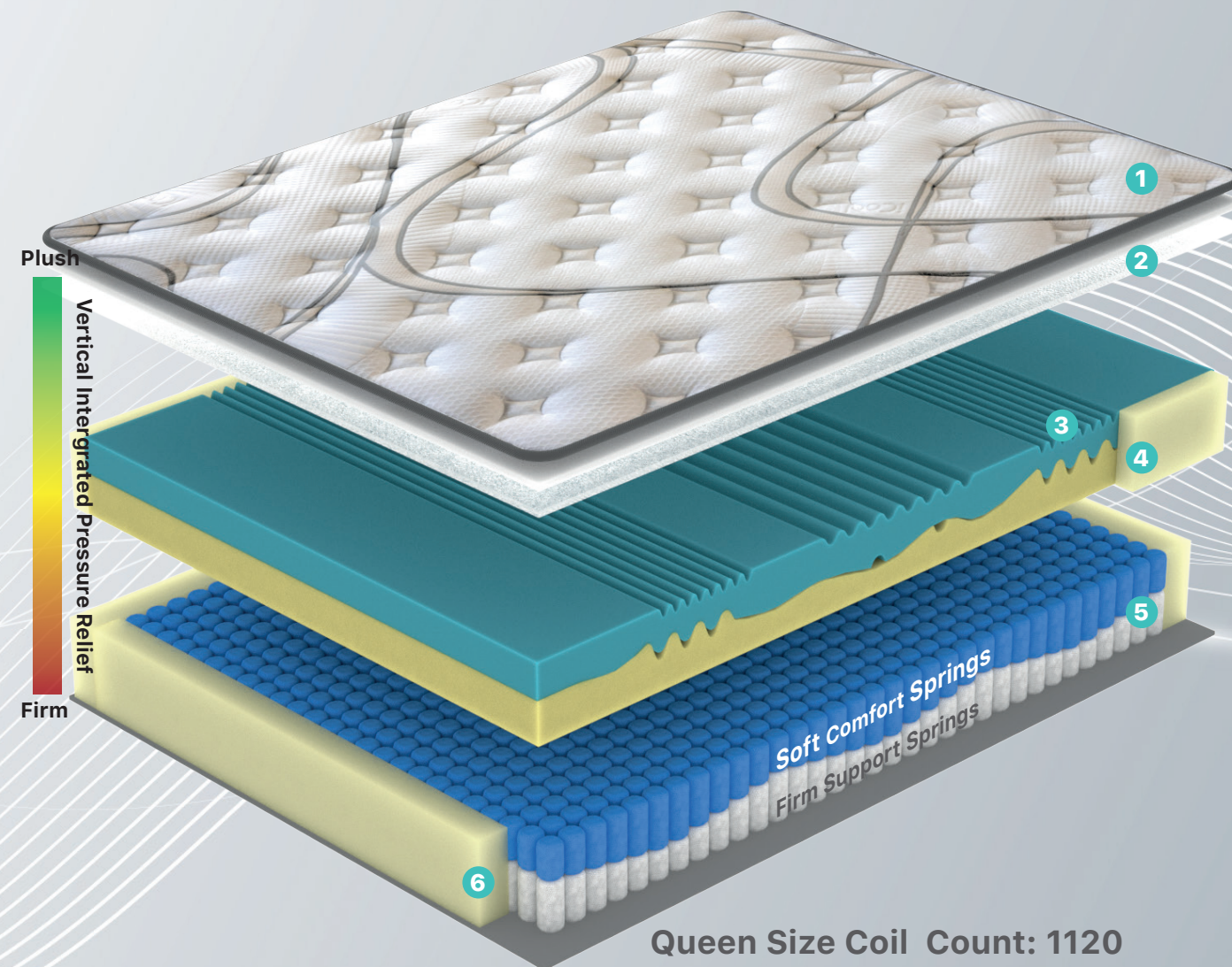
Designed for perfect spinal alignment



TGA Certification

ARTG NO: 459568

TGA MEDICAL DEVICE CLASS 1



Queen Size Coil Count: 1120

## 1. Icool Fabric

“Icool” is a breakthrough in fabric technology it takes heat way from the sleeper and doesn’t feel cold so perfect for all seasons.

## 2. AirScape® Quilting Foam

Premium quilting foam, soft to touch yet highly resilient.

## 3. NeroSoy featuring Neropur®

Top Layer: Neropur is a 60kg density foam infused with Neroli Oil. It has aromatherapy qualities which promote healthy sleep. Neropur has very high resilience and elasticity.

Layer 2: A soy based open cell foam in firm, medium or plush feel. It is this layer that gives the luxury feel and has extrusions in the hip and shoulder area for extra comfort.

## 4. Comfort Layer Edge Support

Extra firm edge attached to the comfort layer preventing roll out.

## 5. Profile Spring

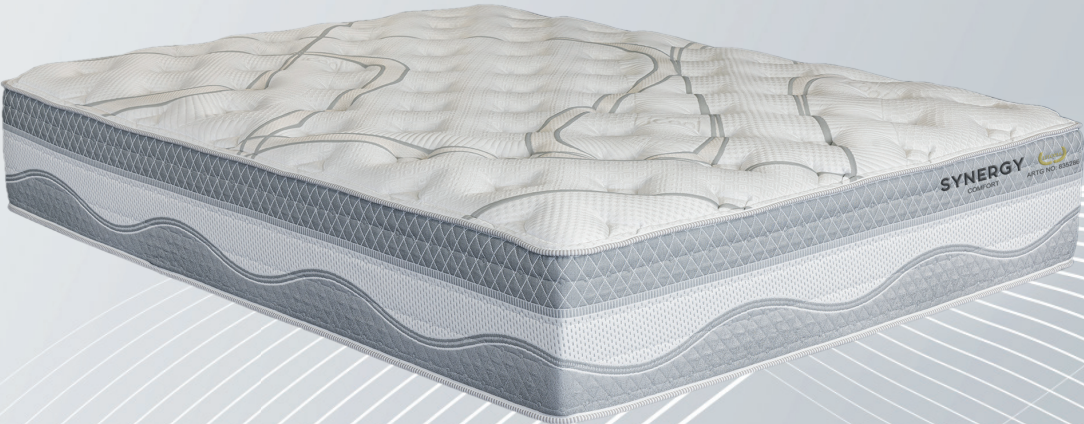
The top springs are soft and bottom springs firm giving incredible gradual pressure relief. It’s designed to profile to your body shape maximising support where you need it.

## 6. Durwall

Superior edge support. 90mm wide side support around the perimeter of the mattress provides edge to edge sleeping surface without roll out.

# THERA *Wave* AVE

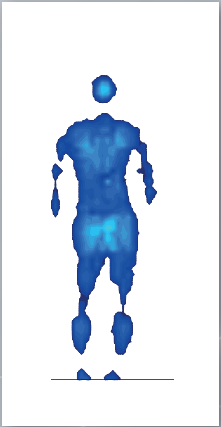
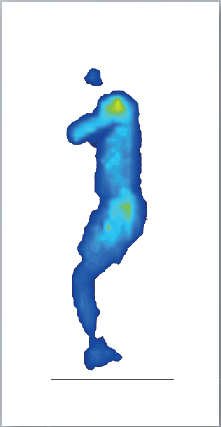
Designed for perfect spinal alignment



Side View



## THERAWAVE MATTRESS



Pressure Gauge

Extreme

High

Medium

Low

Minimum

## STANDARD MATTRESS

